



# 2025 Crime Reduction Plan

Director Brian R. Peete

To **reduce crime** and  
**improve the quality**  
of life for  
the **citizens we serve**



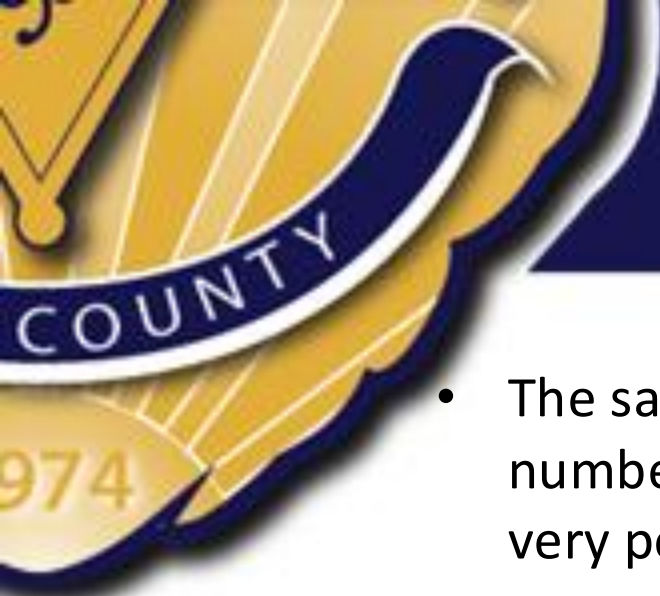
# Purpose of a Crime Reduction Plan

- Identify the most commonly occurring crimes within a jurisdiction then work to reduce or eliminate crime through the development of comprehensive crime-fighting enforcement strategies
- What was taken into account when developing this plan: Data (local, regional, state and U.S.-wide), County Attorney's Office, Law Board priorities, public input/feedback and perception

The logo of the Riley County Sheriff's Office is partially visible on the left side of the slide. It features a yellow shield with a blue banner across the middle that reads "COUNTY". Below the banner, the number "974" is visible. The shield is surrounded by a blue border.

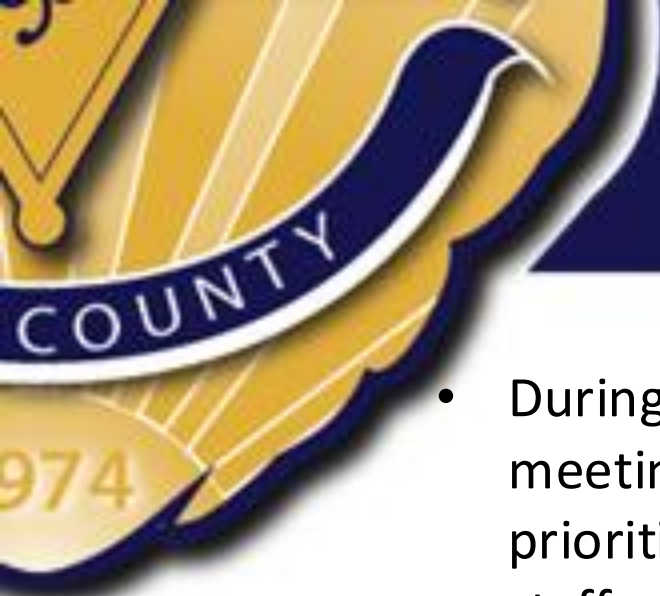
# Data & Input

- Violent crime countywide is down 11%
- Fentanyl remains a significant threat and concern: Work on prevention efforts. Prioritize safety to those poisoned or who overdose. Prioritize preventing violent crime often associated with illegal narcotics. Note: RCPD saw its first in custody jail death which was caused by overdosing/poisoning.
- Riley County is viewed as a safe place via online reviews and community polling: Recent Chamber of Commerce poll of people in Manhattan (highest population density in the County), 55% felt pretty safe and 36% feeling very safe. 80% also believed law enforcement to be very visible and responsible. 99% found public safety to be average, good, or excellent.



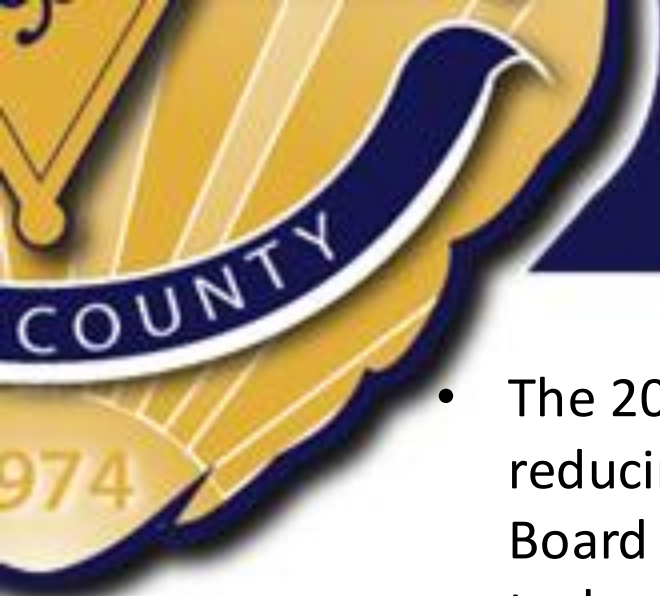
# Data & Input

- The same poll identified the cost of living and the number one concern with 53% describing it as poor or very poor, and 31% labeling it as average
- While shoplifting and theft from vehicle crimes were higher, the other larceny-related categories remained consistent with previous years.
- The last quarter of 2024 saw several firearm and weapons-related crimes to include homicides. Social media posts indicate a ranging perception of a lot of recent violent crime relating to shootings (i.e. What's going on in Manhattan?!).



# Data & Input

- During December 2024, there was a multi-stakeholder meeting on Ft. Riley to discuss the continuation of prioritizing efforts for the safety of soldiers and civilian staff especially with DUI (ensures force readiness during a particularly volatile time of global unrest). This further underscores the need to focus on alcohol-related offenses (MIC, MIP, Overserving, DUI, etc.) and the protection of critical facilities and resources.
- The County Attorney's Office and RCPD remain diligent in prosecuting violent and drug-related crime, but both want to prioritize domestic and human and sex trafficking-related crimes (Note: the CAO now has a dedicated prosecutor for sex-related crimes)



# Data & Input

- The 2024 Law Board wanted RCPD to remain focused on reducing and eliminating drug and violent crime. The Board also wanted to see the department invest in technology, training, and equipment that improves staff safety, reduce administrative tasks to allow for more officers being on the streets, faster investigative conclusions from thorough and responsible investigations, and to increase proactivity, visibility, and community involvement and partnership while reducing operational costs. The reduction of costs and reallocation of internal funding is also a department priority and has long been listed as a strategic goal.





# Violent Crime & Domestic Violence

- The most recent DOJ data (2022) on Sex and Labor trafficking showed an estimated 3,570 trafficking incidents with 78% as sex trafficking and 22% as labor. Of these, 66% were not cleared by police. Based on my training and experience, there are most likely far many more trafficking occurrences that we know about or are being reported.



# Violent Crime & Domestic Violence

- In 2022, the FBI and local police agencies in and around Springfield Missouri identified 84 minor victims of child sex trafficking and child sexual exploitation offenses, and located 37 actively missing children during a nationwide enforcement campaign dubbed “Operation Cross Country.” Law enforcement located 141 adult victims of human trafficking, and arrested or identified 85 suspects with child sexual exploitation and human trafficking offenses: the average age of located victims was 15.5 years with the youngest at the age of 11.





# Violent Crime & Domestic Violence

**Public Safety Professionals are  
GUARDIANS who must protect the  
most vulnerable within every  
community**

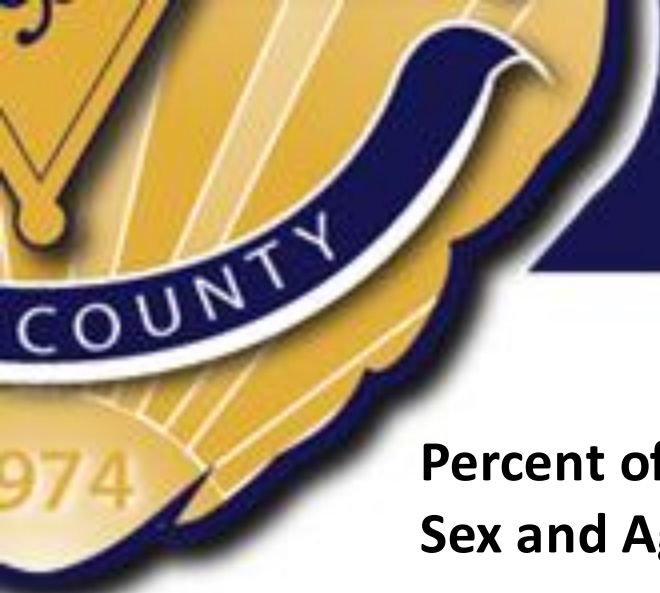




# Human Trafficking

## Percent of Human Trafficking Victimization by Victim, Race (2022)

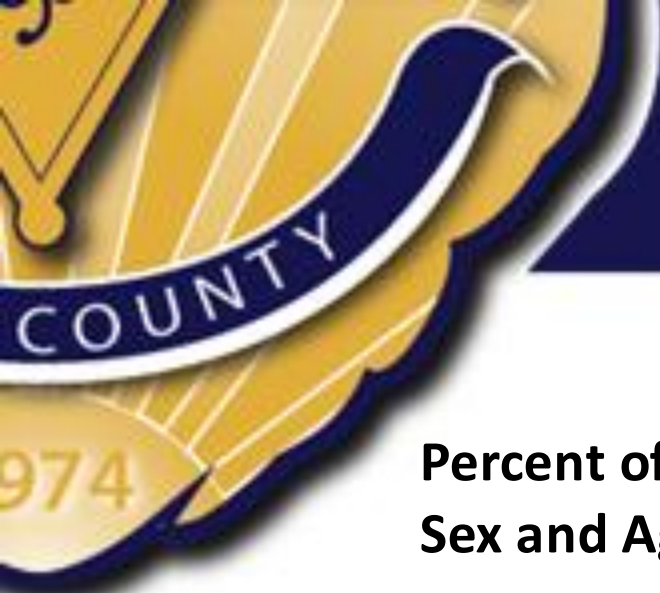
VICTIM RACE	SEX TRAFFICKING	LABOR TRAFFICKING
White*	65.9%	80.0%
Black	28.2+	16.2+
Asian	3.9+	2.1+
Native Hawaiian / Other Pacific Islander	0.3+	--
American Indian / Alaska Native	--	1.7+



# Human Trafficking

## Percent of Human Trafficking Victimizations by Victim Sex and Age (2022)

VICTIM SEX & AGE	SEX TRAFFICKING	LABOR TRAFFICKING
<b>Male</b>	<b>100%</b>	<b>100%</b>
11 or younger	11.2+	2.2+
12-17*	42.3	10.4
18-24	14.0+	27.9+
25-34	14.7+	34.0+
35-64	15.9+	24.8+
65 or older	1.9+	--



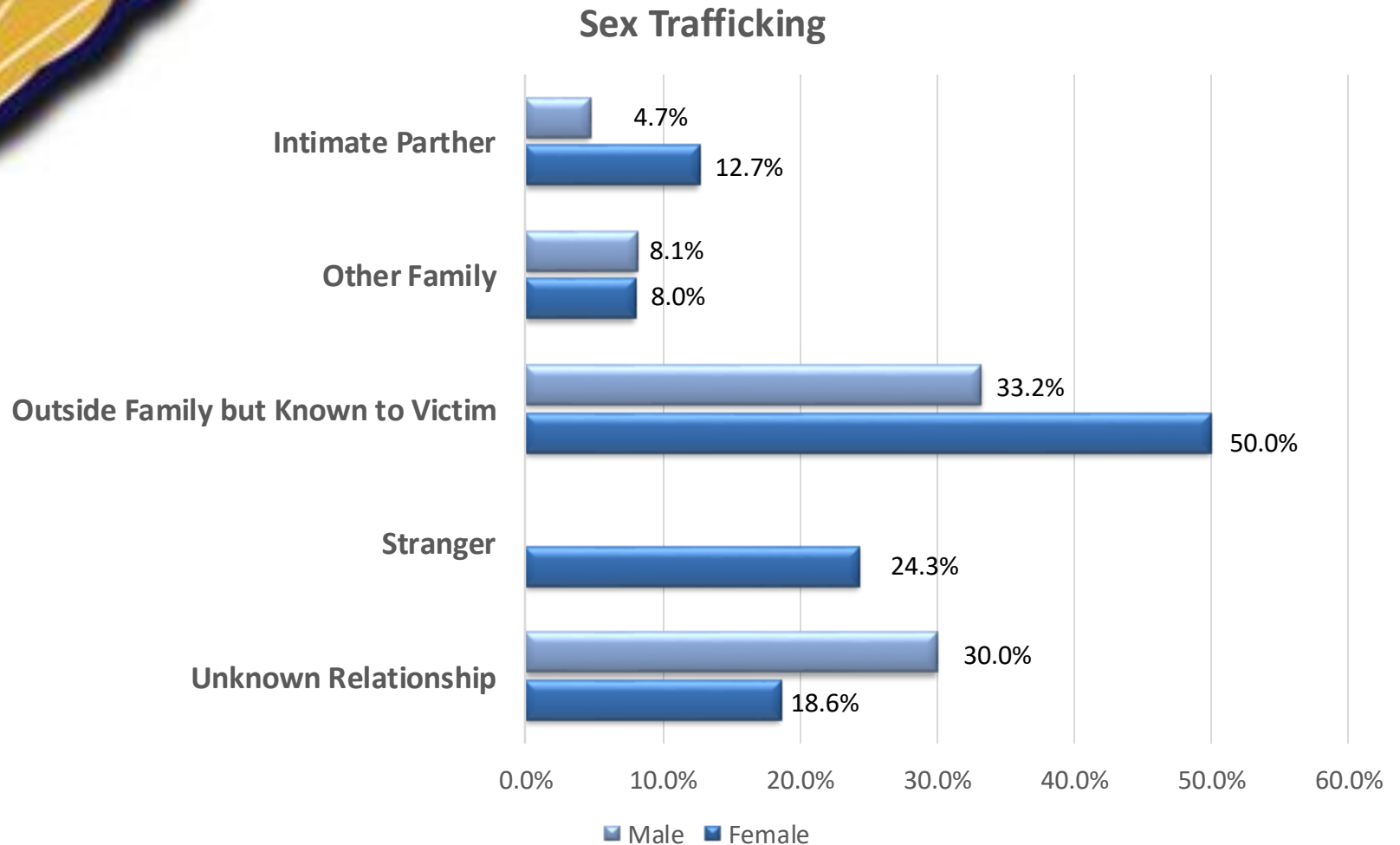
# Human Trafficking

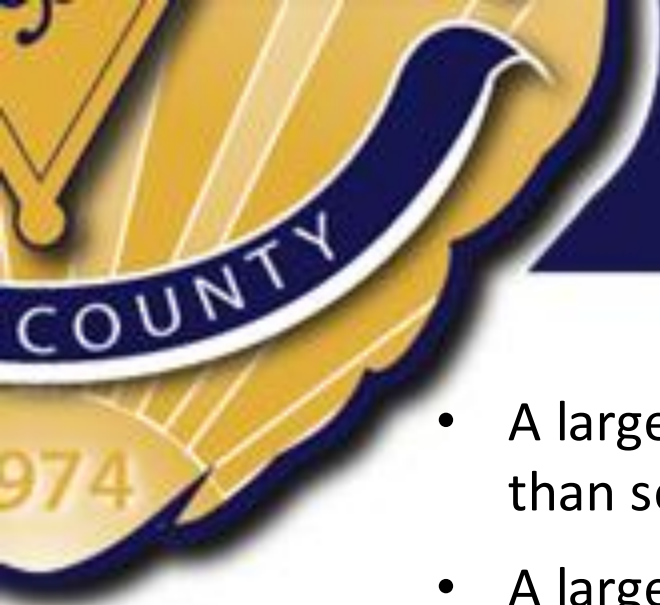
## Percent of Human Trafficking Victimization by Victim Sex and Age (2022)

VICTIM SEX & AGE	SEX TRAFFICKING	LABOR TRAFFICKING
<b>Female</b>	<b>100%</b>	<b>100%</b>
11 or younger	5.3+	3.3+
12-17*	44.9	22.6
18-24	18.3+	27.3
25-34	17.0+	22.1
35-64	14.2+	23.7
65 or older	0.3+	1.0+



# Sex Trafficking





# Sex Trafficking

- A larger percentage of labor trafficking victims (80%) than sex trafficking victims (66%) were white.
- A larger percentage of sex trafficking victimizations (28%) than of labor trafficking victimizations (16%) involved a black victim.
- Sex Trafficking victimizations against females (13%) were more likely than those against males (5%) to involve an alleged offender who was an intimate partner.





# Violent Crime & Domestic Violence- Continued

- In 2023, the DOJ reported there were 629,820 intimate partner violence victimizations and 1,165,890 domestic violence victimizations (with about half of intimate partner and domestic violence victimizations being reported).
- Riley County sees significant Domestic Violence victimizations each year.
- Not only do violent crime and narcotics result in serious injury (mentally and physically), death, and broken lives and families, it has a financial cost: roughly \$15,000 to \$22,000 in operational and overtime costs per incident.



# How RCPD Will Meet these Challenges

- Prevention-A cooperative strategy where stakeholders are in partnership with other government entities, social service agencies, academic institutions and community organizations.
- Proactivity-This means using evidence-based, data-driven practices and analytics for intelligence-led policing to identify or potentially predict crime, as well as how to best deploy and manage resources to stop it.



# How RCPD Will Meet these Challenges

- Response and Accountability-Similar to proactivity, quality (and modern) equipment and training are essential to increase the likelihood of safe preferable outcomes when responding to calls for service and critical incidents.
- Reducing Recidivism-Crime (victims and perpetrators) is cyclical. We must invest time, resources, influence and voice into ending these cycles.



# How RCPD Will Meet these Challenges

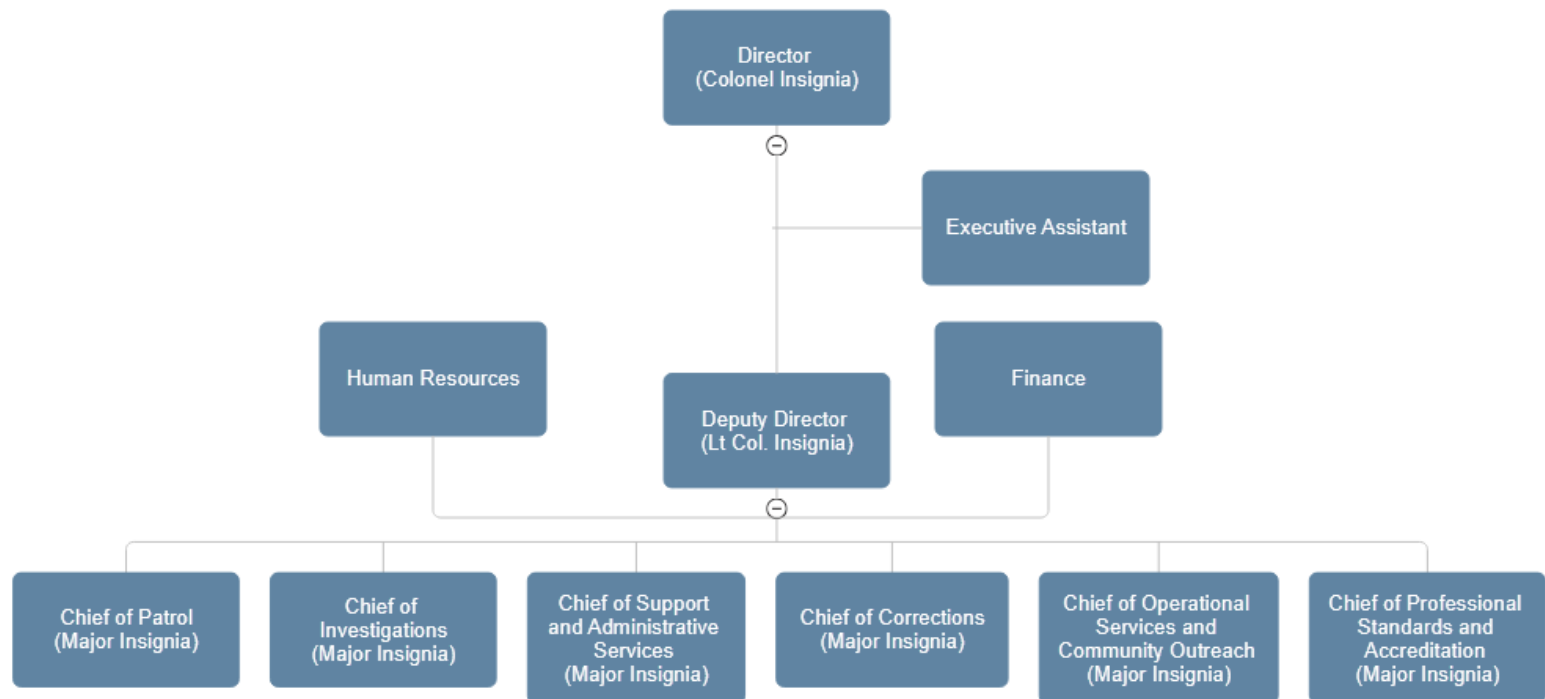
**“Law Enforcement” has never been enough to improve and maintain community safety: It only hides symptoms. Human behavior research data is out there so we must study it to develop best and evidence-based solutions that holistically address crime.**





# Reorganize

Streamline and consolidate administrative requirements to allow for frontline managers to concentrate on operational needs and proactive-based strategies and enforcement.







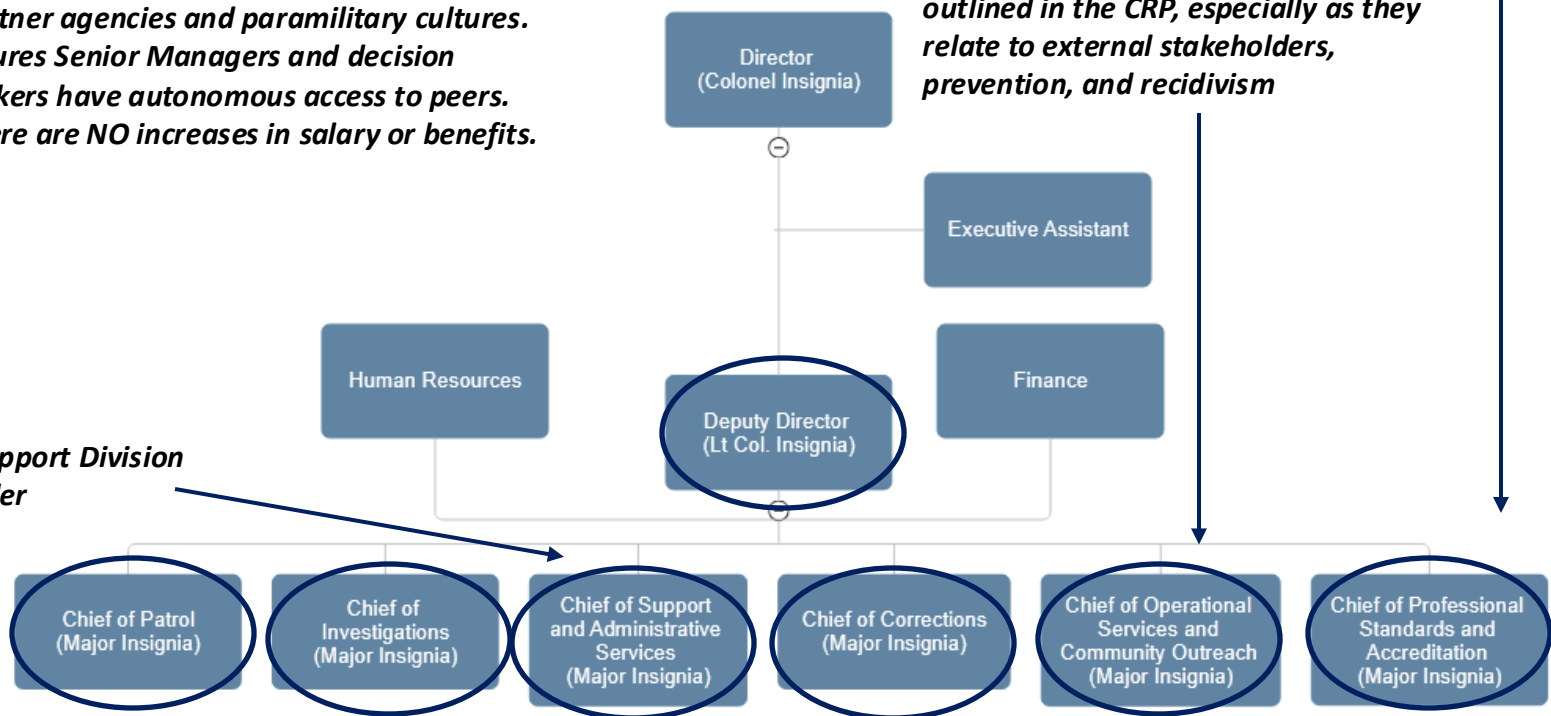
# Reorganize

*Combines the IA Lieutenant with the Administrations Captain. Additionally, it is best practice that investigators are of the same or higher rank of subjects and several historical issues have showcased this need*

*CRP requires increased collaboration with partner agencies and paramilitary cultures. Insures Senior Managers and decision makers have autonomous access to peers. There are NO increases in salary or benefits.*

*Absorbs all community outreach, partnership efforts, & public facing programs, and manages all new projects outlined in the CRP, especially as they relate to external stakeholders, prevention, and recidivism*

*Former Support Division Commander*



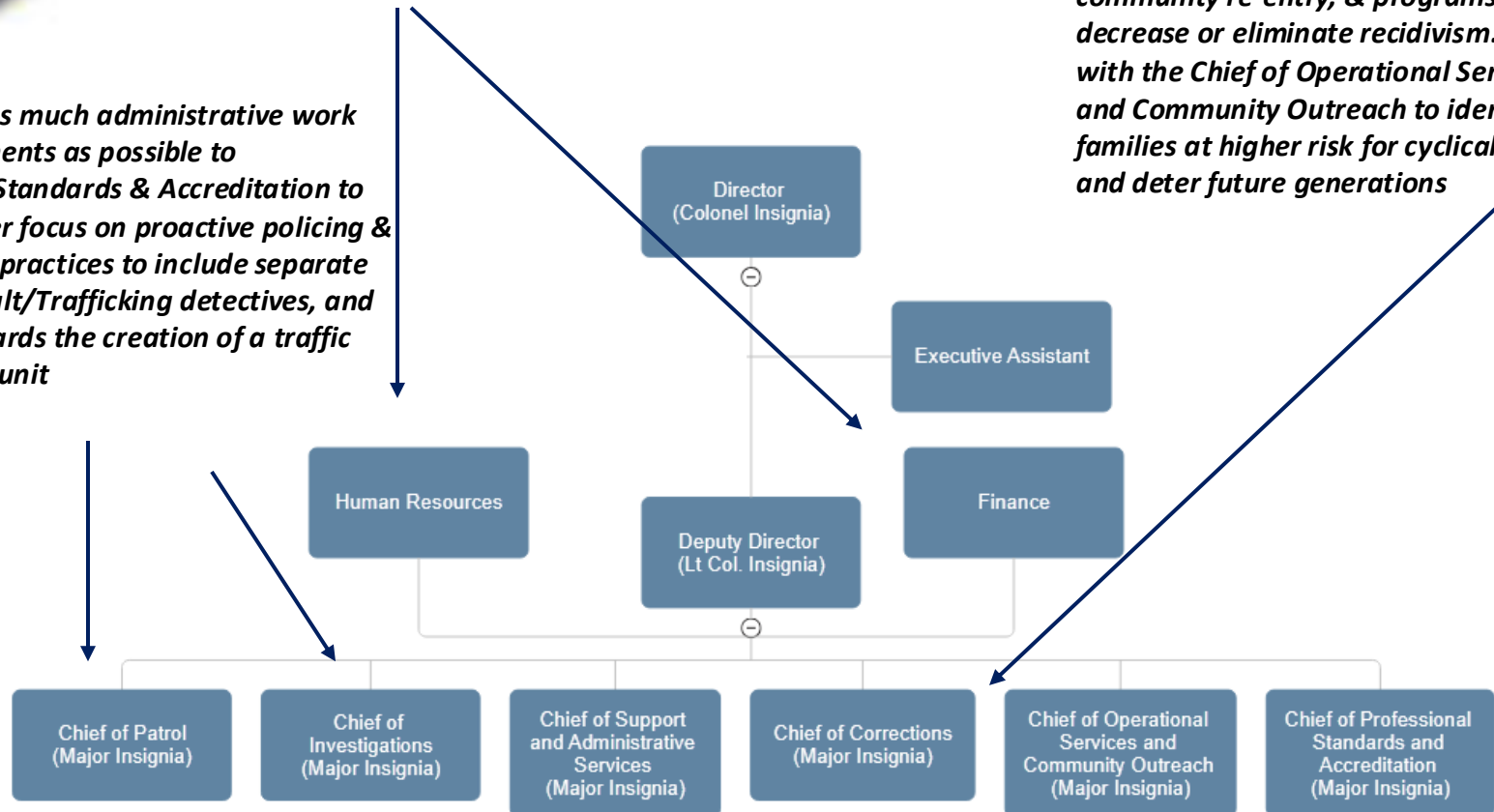


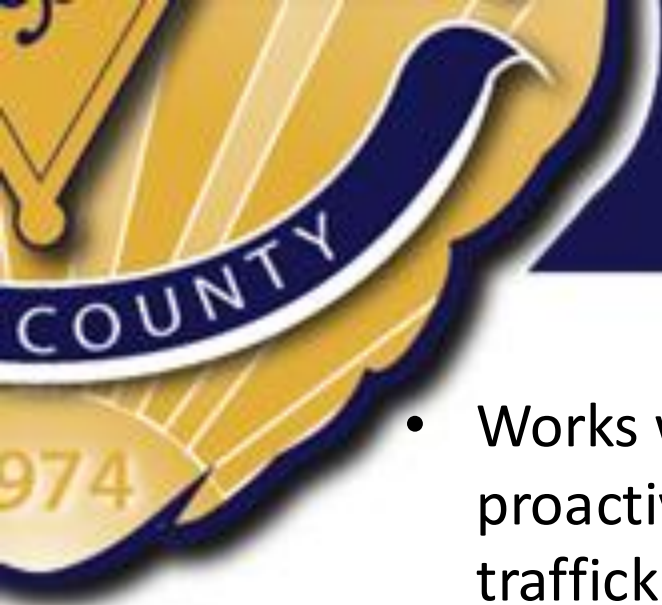
# Reorganize

*To eliminate divisional conflict (because these decisions are the direct responsibilities of the Director), HR & Financial decisions fall directly under the Office of the Director*

*Incorporate programs to reduce transportation security workloads on patrol, implement internal intelligence and investigative capabilities, & continue to introduce programs designed to help inmates with community re-entry, & programs that decrease or eliminate recidivism. Work with the Chief of Operational Services and Community Outreach to identify families at higher risk for cyclical crime, and deter future generations*

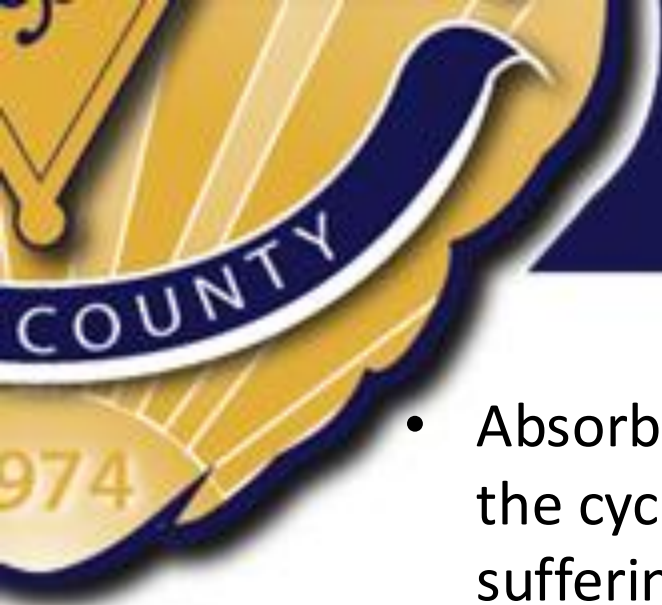
*Will unload as much administrative work and requirements as possible to Professional Standards & Accreditation to allow for laser focus on proactive policing & investigative practices to include separate DV/Sex Assault/Trafficking detectives, and working towards the creation of a traffic enforcement unit*





# Responsibilities of the New Major Position Include...

- Works with Patrol and Investigations to implement proactive efforts to identify and eliminate human trafficking within the county (keeping relationships strong and helping to solicit public help in solving and preventing crime). This includes outreach to hotels, Airbnb, etc., and transportation hubs, researching open source data, and reviewing internal data and community complaints to identify homes, businesses, and outdoor spaces where sex and labor trafficking may be occurring.
- Manages Court Services, the Public Information Officer and Police Service Aides



# Responsibilities of the New Major Position Include...

- Absorbs the Victim Services Advocate to help break the cycles of DV, and to ensure deflect those suffering from mental illness from the criminal justice system by adopting strategies from the P.I.E.R (Prevention, Intervention, Enforcement, Reentry) and PAARI (Police Assisted Addiction and Recovery Initiative) models
- Spearhead RCPD's absorption of the ACOs from the City and will lead that new unit
- Re-Introduce Citizen Academy and Explorer programs and spearhead all recruitment efforts



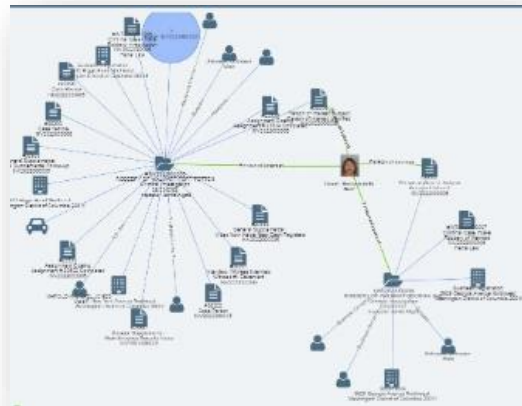
# Responsibilities of the New Major Position Include...

- Secure grant writers to identify, apply for, and be awarded local, state, and federal grants
- Ensure transparency, information dissemination “Maximum Information with Minimal Delay,” and community input
- Manage and track all contracts and new administrative projects, and report that progress to the Deputy Director



# Other CRP Strategies to be Implemented

- Procure new equipment and technology to maintain readiness, competency and confidence, and investigative capabilities (Cameras, AI, Case Mgmt. Software, VR training systems, etc.)
- Outfit Patrol and Corrections officers, Evidence, CIU, and public faces staff with Naloxone
- Focus on private and public grants!





# Other CRP Strategies to be Implemented

- Assign dedicated officers to investigate sex and domestic-related crimes
- Develop programs to assist in assimilating inmates back into the community, to include the feasibility of Buprenorphine with MAT
- Division Chiefs to establish foundational working relationships with K-State PD and regional agencies, as well as visiting with larger and best-practice agencies for concepts which RCPD may be able to incorporate





# Other CRP Strategies to be Implemented

- Ensure maximum safety and security at courthouses, and common public congregation locations, and any locations where military members may focus or congregate to (Downtown, Aggieville, around K-State and NBAF, etc.)
- Lay the foundation to create a combined traffic enforcement and K9 unit
- Look for internal fiscal reallocation opportunities to fund law enforcement priorities which include responsible increases in staffing levels to meet current and future needs (SRO costs, OT associated with community events not requiring an immediate law enforcement presence, existing contracts, shift assignments, etc.)



**Riley County Police Department**

1001 South Seth Child Road  
Manhattan, Kansas 66502

(785) 537-2112

[www.RileyCountyPolice.org](http://www.RileyCountyPolice.org)

# Questions?



**RILEY COUNTY**  
**POLICE DEPARTMENT**

To reduce crime and improve the quality of life for the citizens we serve